

Wood cream

Pigmented, decorative wood preservative in cream form

- Moisture resistant.
- UV resistant
- Protects from Blue stain and algae.
- Does not tear or peel.
- No dripping.
- Spreads by itself without leaving marks.
- Penetrates deeply into the wood.
- Optimal flow properties for greater coverage.
- Gives extra protection against water.



Usage: For treating wood in indoor and outdoor areas without static loads and without ground contact



TOP COATS

LT Stain UV

Product Code: M-KH 03

Solvent based, medium solid stain with very good UV protection for wood in outdoor/ indoor areas.

- Closes the gap between thin-liquid impregnation stains and thick-layer stains.
- Ideal for colored and decorative treatment of wood.
- Has a silk gloss finish.
- Has good resistance to weather
- Water and soil repelling
- Easy to maintain
- High UV protection
- Excellent working and flow properties
- Does not peel
- Easy to apply



Usage

- For treating wood in outdoor areas without static loads and without ground contact.
- Ideal for decorative treatment of soft and hardwood, e.g. wood siding, wood facing, wood panels, wooden walls, wooden gates, garden furniture, windows, doors, furniture, etc.
- Used for coloured subsequent treatment of load-bearing and reinforcing wood building elements that have been impregnated with a wood preservative.



REMMERS INDIA

Remmers India Private Ltd. is a wholly owned subsidiary of Remmers Baustofftechnik, found in the year 2008, providing the best wood protection, care and treatment products for interior, exterior and garden wood.

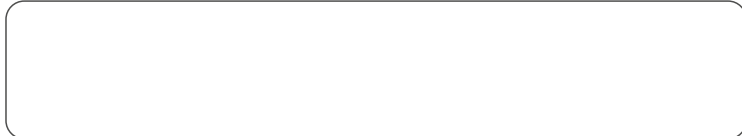
Remmers India brings you ideal solutions for protecting, preserving and restoring the buildings and for the wood finishing industry, from basement till the roof. Offering premium quality, made in Germany products which are so easy to apply that one can do it yourself. With its corporate office based in Gurgaon and warehousing facility in Mumbai and Delhi, Remmers India has a vast distribution network spread throughout the country.

Remmers Baustofftechnik has its headquarters in Lönigen, Germany, employing more than 1200 employees. Having 16 subsidiaries located around the world, and manufacturing facilities located at Lönigen, and Duben, Germany, Remmers has in its gamut more than 400 premium quality product systems for- waterproofing, façade restoration and protection, industrial and commercial flooring, heritage conservation and preservation, wood preservation, wood protection and finishing.

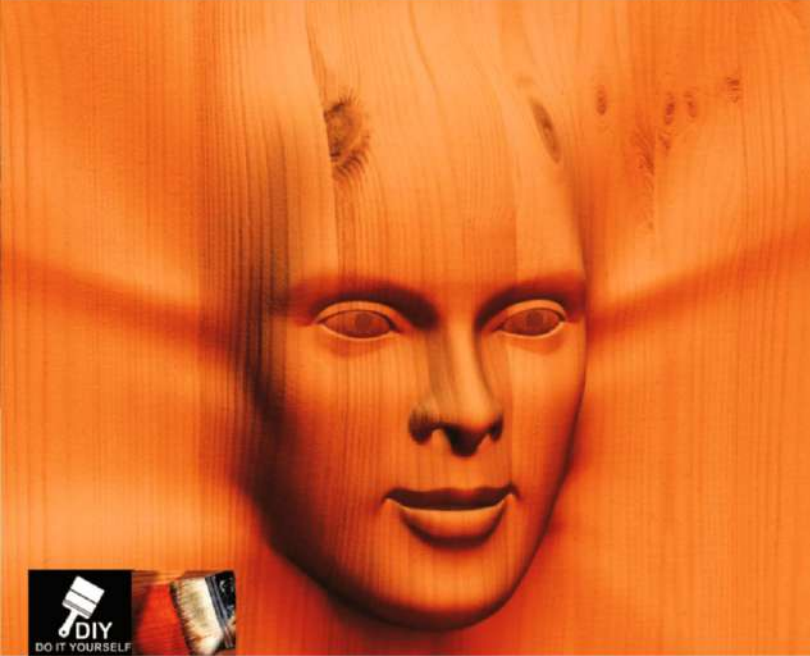


Remmers India Pvt. Ltd
Address: KH.No. 621B, Road No.
Zero, Ghitorni Delhi 110030
Tel. No.: +91-124-4009131
E-Mail: info@remmers.in
Website: www.remmers.in

Authorised Dealer



ULTIMATE WOOD PROTECTION
FOR ALL WOOD SURFACES



Premium WoodCare solutions for exteriors & interiors



MADE IN
GERMANY

- Best protection for all kinds of wooden surfaces.
- German based impregnation patented technology.
- Provides a polished look.
- Protects from weathering and damage by the insects.
- So easy to use that one can do-it-yourself.
- Comes in ready-made shades and is ready to use.
- Low-cost & long-lasting protection.
- Eco-friendly products which do not harm human health.
- Lasts for 5 years and above.



Aidol HK Stain

Product Code: HSM-LV 30

A decorative, liquid wood preservative stain for use in outdoors and inside.

- Protects from UV rays.
- Moisture resistant.
- Protects from termites & insects.
- Safeguards from fungus and algae.
- Protects against blue stain.
- Does not flake or peel.
- Easy to apply.

Usage:

- Used for coating cladding, fences, gates, pergolas, garden pavilions, roof eaves, gables, facades, etc.
- Protects the wood from wetness and sun.
- A higher solid content prevents gnawing by wasps.



How to Polish Yourself

Remmers wood protection readymade polish is an impregnation technology, and has to penetrate inside the wood.

Step 1.

- If the surface is already painted or polished, remove with the help of paint remover or sand paper till the actual wood comes in a condition to absorb the Remmers readymade polish .

- If any filling is required for smoothening the surface, it should be done with filling putty or with POP and chalk mitti and not with fevicol.

- If required, first sand the surface with 80 no., and thereafter with 120 no., 400 no. waterproof and lastly with 600 no. water proof sandpaper till the surface is smooth enough.

- All sanding to be done in the direction of the grains of the wood.

Step 2.

- First Coat: Apply one coat of HK stain with a soft cloth or brush on the well prepared surface, in the direction of the grains of the wood.

- Let it dry for at least 12 hours.

- Use 1000 no. waterproof sandpaper to remove the dust particles which would have come on the surface. All sanding should be done in the direction of the grains.



Step 3.

- Second Coat: Apply a thin second coat of HK Stain or Wood Cream with a soft cloth or brush.

- Let it dry for at least 12 hours.

- Again use 1000 no. waterproof sandpaper to simply remove the dust particles.

Step 4.

Third Coat : Apply one or two very thin coats of LT Stain.

Frequently asked questions

1. Do HK Stain , Wood Cream and LT Stain need to be diluted with water before use?

No, the product comes in readymade form and in readymade shades. Simply shake the can before use.

2. Can the product be mixed within the shade?

HK Stain can be mixed with HK Stain, Wood cream with wood cream and LT Stain with LT Stain. This is done if one needs to make his own shades or needs to make them lighter or darker.

3. If a dark colored wood is used, can we get a light colored stain effect on that wood?

If any colour is applied on dark wood, it will stay dark only. If the stains are applied on

light colored wood then every different color of stain will show its effects.

4. How to get the same colour on two different types of wood?

First apply it on the dark wood and check the color. Take a small quantity of HK Stain in a small container and mix it with any reputed wood stainer (Liquid form which is normally used in paints) to get the desired result. This process may require to be applied few times till the desired shade matching is achieved to give both the woods the same look. Accordingly prepare the desired shade in quantity as required.

5. Can I do this system myself?

Yes, this system is a `Do it yourself` system (DIY). It only requires proper sanding and smooth finishing of the wood surface. Waterproof sandpapers of 600 no. and 1000 no. should be used after normal sanding to get the desired smoothness and high-end polished look .

6. For how long does the system last?

It usually lasts for 5-8 years. It may shorten or fade away due to harsh dusty weather conditions.

7. Will the system peel off as it does in paint or Polish?

No, this system penetrates inside the wood and so does not form a coating which may peel off.

8. What will happen after 5-8 years or when we have to do it again?

Simply remove the dust particles with the help of sandpaper and apply the system again.

9. Can we use the products individually?

Yes you can, but to derive maximum benefits of wood protection or to get a semi gloss look that stays for long, using of complete system is recommended.

10. How will I save money on application?

Conventional methods of polish take lot of time and labour cost increases. But in our system only sanding takes time. Rest of the application is done very fast. One saves three times the labourcost. Even the consumption of material per liter is less if applied on a well sanded wood surface.

11. How many coats of LT Stain can I use?

One can only use two thin coats of LT Stain. After two coats it does not penetrate inside the wood and will just form a layer like rubber on the surface.



Usage: Remmers PUR Aqua Top 1K is used for transparent fixation and sealing of flake covers.

How to apply

- The surfaces to be treated must be clean, dry and load-bearing.

- Stir thoroughly directly before using.

- The temperature of the surrounding air, the material and the substrate must be at least 10 °C, max. 25 °C. Relative humidity should not exceed 80%.

- Do not apply in direct sunlight.

- In outdoor areas the sealant can only be used as a fixation layer.

- Make sure that the surface has sufficient slope so that rain water can run off and no pools of water can form.

- After 12 hours at 20 °C the coating can be subjected to light mechanical loads and further coated. Full mechanical and chemical loading capacity is achieved after 7 days at 20 °C. Lower temperatures delay drying time.

- Requires PU roller, epoxy roller, 1 mm rubber wiper, protective gloves.

- Can add 5% water for easy flow.

- Clean tools with water after use.



TOP COATS PUR Aqua Top 1K Product Code : M-DF 02

Single component, glossy, clear fixation layer and sealant for indoor /outdoor areas.

- Water based
- Ready to use
- Fast drying
- Easy to apply
- Non-yellowing and transparent.
- Odourless



PL 113 Parquet Laquer

Abrasion and scratch resistant varnish for parquet and wood floors in interior areas and decorative furniture coatings. A sealing varnish which can be applied by rolling, brushing or spraying.

- PVC resistant
- Has low odour
- Easy to apply
- Fast drying



How to apply

Stir the contents of the can well before using.

Apply with an acrylic brush or a roller.

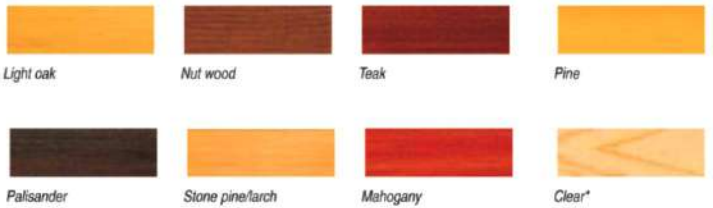
Do not apply more than two coats in one day.

Do not use at temperatures below +15 °C (material and surface temperature).

Clean tools immediately after use with water and a detergent.

Ensure good ventilation while working and drying. Lower temperatures and higher humidity delay drying.

Colours available in HK Stain, Wood cream and LT Stain



*Shades shown are for indication purposes only. Actual shades may vary depending upon type of wood.

• Windows & Window Frames • Doors & Door Frames • Wooden Gates • Garden and landscaping • Garden Furniture • Fences and play equipment • Wooden Walls • Wooden Panels • Wooden Cladding • Wooden Flooring • Furniture • Wooden facades